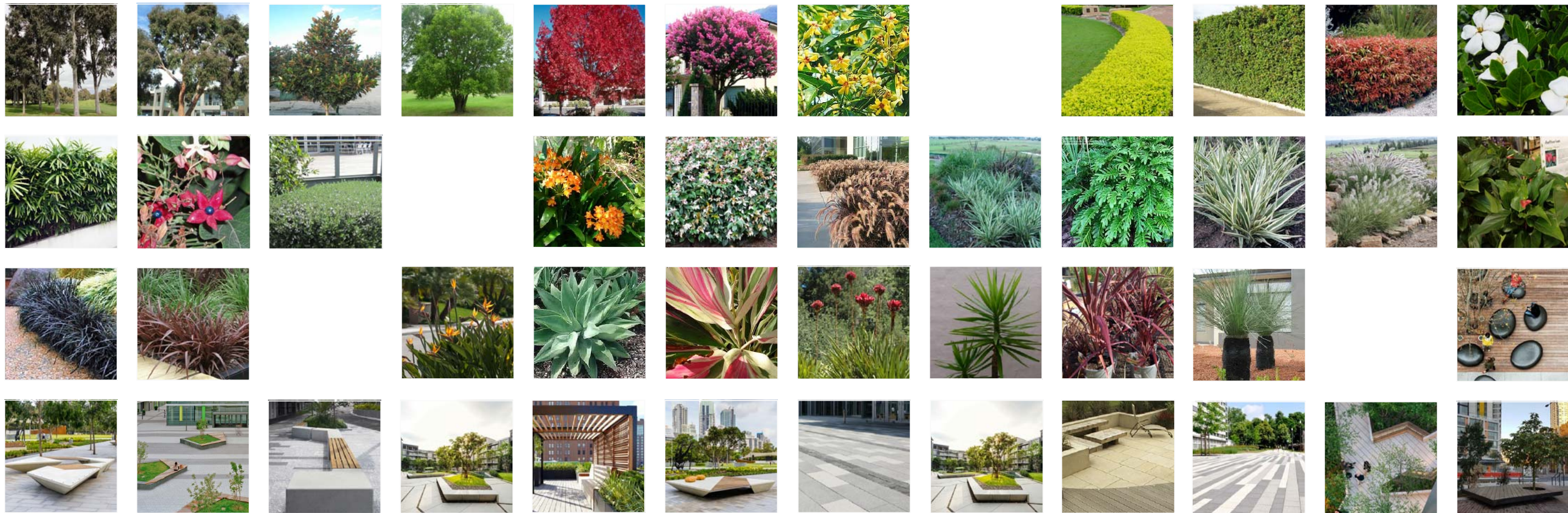


LANDSCAPE PLAN: ground floor scale: 1:200

### PROPOSED PLANTING & LANDSCAPE ELEMENT PALETTE



### PROPOSED INDICATIVE PLANT SCHEDULE

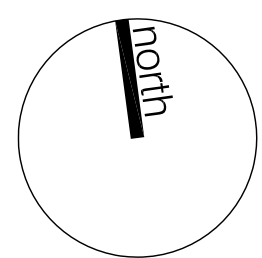
BOTANICAL NAME	COMMON NAME	POT SIZE	MATURE HEIGHT
TREES			
<i>Angophora costata</i>	Smooth-barked Apple	45L	15m
<i>Corymbia maculata</i>	Spotted Gum	45L	20m
<i>Elaeocarpus reticulatus</i>	Blue-berry Ash	45L	8m
<i>Eucalyptus 'Summer Red'</i>	Flowering Gum	45L	6m
<i>Fraxinus giffithii</i>	Evergreen Ash	45L	6m
<i>Lagerstroemia indica</i>	Crape Myrtle	45L	6m
<i>Tristanopsis laurina 'Luscious'</i>	Water Gum	45L	8m
SCREEN & BARRIER SHRUBS			
<i>Acmena smithii var. minor</i>	Dwarf Lillypilly	25L	3m
<i>Callistemon 'Great Balls of Fire'</i>	Great Balls of Fire Bottlebrush	200mm	1.5m
<i>Callistemon 'Great Balls of Fire'</i>	Great Balls of Fire Bottlebrush	200mm	1.5m
<i>Cornus alba</i>	White Correa	150mm	1.5m
<i>Duranta 'Sheena's Gold'</i>	Golden Dew Drop (Hedge)	300mm	2m
<i>Gardenia augusta 'Florida'</i>	Gardenia 'Florida'	200mm	1.5m
<i>Philotheca myoporoides</i>	Wax Flower	200mm	1.5m
<i>Photinia glabra 'Rubens'</i>	Photinia	25L	2m
<i>Rhapis excelsa</i>	Lady Palm	25L	2m
<i>Syzygium australe 'Aussie Southern'</i>	Syzygium 'Aussie Southern'	25L	2m
TURF GRASS			
<i>Stenotaphrum secundatum</i>	Sir Walter Buffalo	N/A	
GROUND COVERS			
<i>Alternanthera dentata</i>	Ruby leaf alternanthera	150mm	0.5m
<i>Cleome miniata</i>	Katfir Lilly	150mm	0.4m
<i>Dianella caerulea 'little jess'</i>	Flax Lily	150mm	0.4m
<i>Dianella revoluta 'little rev'</i>	Black Anther Flax Lily	150mm	0.8m
<i>Dianella Silver Streak</i>	Silver Streak Flax Lily	150mm	0.4m
<i>Duranta Mini Gold</i>	Dwarf Golden Dew Drop	200mm	0.5m
<i>Imperata cylindrica</i>	Showy Flowers	150mm	0.6m
<i>Liriope muscari</i>	Lily Turf	150mm	0.3m
<i>Lomandra longifolia 'Katrinus'</i>	Spiny-headed Mat-rush 'Katrinus'	150mm	0.7m
<i>Ophiopogon japonicus 'Black Dragon'</i>	Mondo Grass	100mm	0.3m
<i>Pennisetum advena 'Rubrum'</i>	Purple Fountain Grass	150mm	1.5m
<i>Pennisetum alopecuroides</i>	Black Lea	150mm	0.8m
<i>Phlodoendron Xanadu</i>	Xanadu	200mm	0.8m
<i>Poa sieberiana</i>	Grey Tussock grass	150mm	1m
<i>Spathiphyllum Sensation</i>	Peace Lily	200mm	1m
<i>Themeda australis</i>	Kangaroo Grass	200mm	0.8m
<i>Trachelospermum jasminoides 'tricolor'</i>	Tricolor Jasmine	150mm	0.2m
ACCENT PLANTS			
<i>Agave attenuata</i>	Century Plant	200mm	1.5m
<i>Alpinia caerulea</i>	Native ginger	5L	1.5m
<i>Cordyline australis 'Cabernet'</i>	Cordyline Cabernet	200mm	1.2m
<i>Dorothy excelsa</i>	Gymea Lily	5L	2m
<i>Dracaena Marginata</i>	Dragon Tree	250mm	2m
<i>Phormium 'Bronze Baby'</i>	Bronze Baby Flax	200mm	0.8m
<i>Strelitzia reginae dwarf</i>	Dwarf Bird-of-Paradise	200mm	0.6m



## 2-10 Stanley Street, KOGARAH NSW

Do not scale off this drawing. Use figured dimensions only. Resolve discrepancies with The Landscape Architect before proceeding. Copyright of this drawing and designs executed remains vested in CANVAS landscape architects. Copyright remains with the Landscape Architects. Reproduction of this document is not permitted without the approval of the Landscape Architect. Contractors to verify site conditions and dimensions

0 1 2 5 10 20 scale @1:200A1  
@1:400A3



dwg title	scale: 1:200 @a1 & 1:400 @a3	revision	date
landscape plan:	dwg no.: DA-L101	A da submission	03/10/17
ground fr & landscape	Client: CARLTON INVESTMENTS NO 2. PTY LTD	B da amendments	25/06/18
image palette		C da amendments	12/10/18
		D da amendments	21/11/18